



University of
Pittsburgh

School of Dental Medicine



ABOUT US

OMF Radiologist:

Anitha Potluri BDS, DMD, MDSc
Diplomate ABOMR

Suvendra Vijayan BDS, MPH, MS

Radiology staff:

Sheila Schrembeck RT(R)
Karly Gibbons



CONTACT US

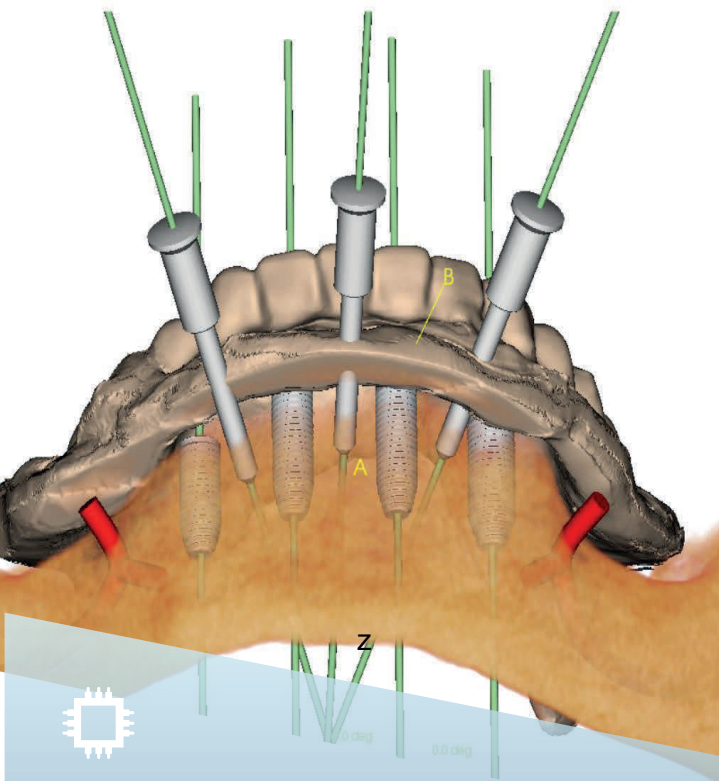
University Dental Health Services
Oral and Maxillofacial Radiology Imaging
Service
G121 Salk Hall
3501 Terrace Street
Pittsburgh PA 15261-1933

Scheduling desk: 412-648-8612
Radiologist's office: 412-648-8633
Administrator's office: 412-648-8636
Fax: 412-383-9142
Pathology Biopsy Service: 412-648-8629

ORAL AND MAXILLOFACIAL RADIOLOGY IMAGING SERVICE

University Dental Health
Services

A Division of the University of Pittsburgh
School of Dental Medicine



ORAL AND MAXILLOFACIAL RADIOLOGY IMAGING SERVICES

Cone Beam Computed Tomography (CBCT) service is now available at University Dental Health Services to help dentists provide cutting edge imaging for their patients.

Revolutionize your practice with CBCT imaging. We are excited to offer you an advanced imaging modality in multiple volume sizes to enhance visualization, diagnosis and treatment planning for your patients.

CBCT is a valuable diagnostic tool for treatment planning in implant dentistry, oral pathology, maxillofacial trauma, TMJ and sinus pathology, orthodontic and orthognathic surgical procedures.

The volumetric data obtained from CBCT scans can be used with third party software for surgical planning.

We make life simpler for you

Interpretation Service

If you have the images, we can provide the interpretation only.

Patient data are transferred using secured, online service.

Fees are very competitive! Call for pricing and how to prescribe a scan.



Other Services

- CD with a viewer and if requested, another CD with DICOM files for surgical guide construction.
- Direct upload of patient's DICOM files to any surgical guide making company of your choice.
- Free image models with patient scan.
- Detailed report by fax and/or mail. We will call you with any urgent results.
- Our staff are knowledgeable and can assist you with billing.
- We are always happy to discuss a case with you.

Who We Are?

The imaging service department is staffed by a Medical Radiology Technician, a dental assistant, an Oral and Maxillofacial Radiologist and a board-certified (American board of Oral and Maxillofacial Radiology) Oral and Maxillofacial Radiologist.



QUALITY AND SERVICE

New Technology

Planmeca ProMax CALM analyzer compensates for slight movement during scan.

Carestream 8100 3D with 2D and 3D capabilities, preferred by endodontists.

We calibrate our machines for optimal quality images and accurate measurements.

2D, Intra-oral and extra-oral imaging is also available.

All imaging is accompanied by an interpretation report by a board-certified radiologist.

